

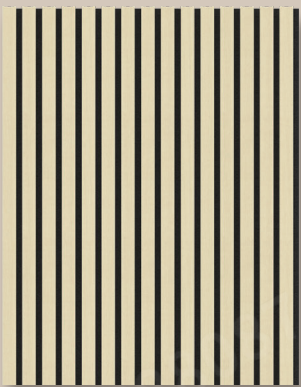
ACOUSTIC PANELS

NATURAL AMBIANCE FOR THE HOME

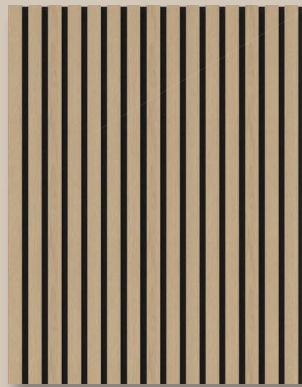


“ Noise and echo can be incredibly disruptive in any work or home environment. INTCO ACOUSTIC PANELS are created with unique sound-absorbing felt and sustainable materials to create the perfect balance and harmony to any home or office. ”

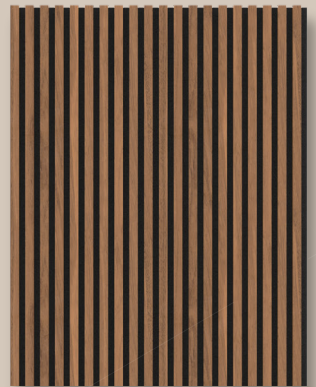
Product Series



Thayer

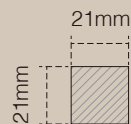
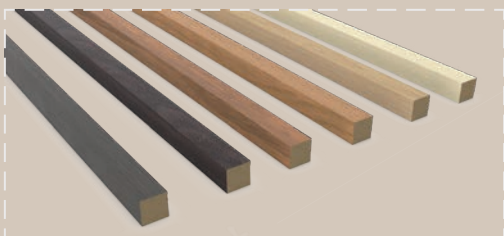


Auden



Ledger

Accessories

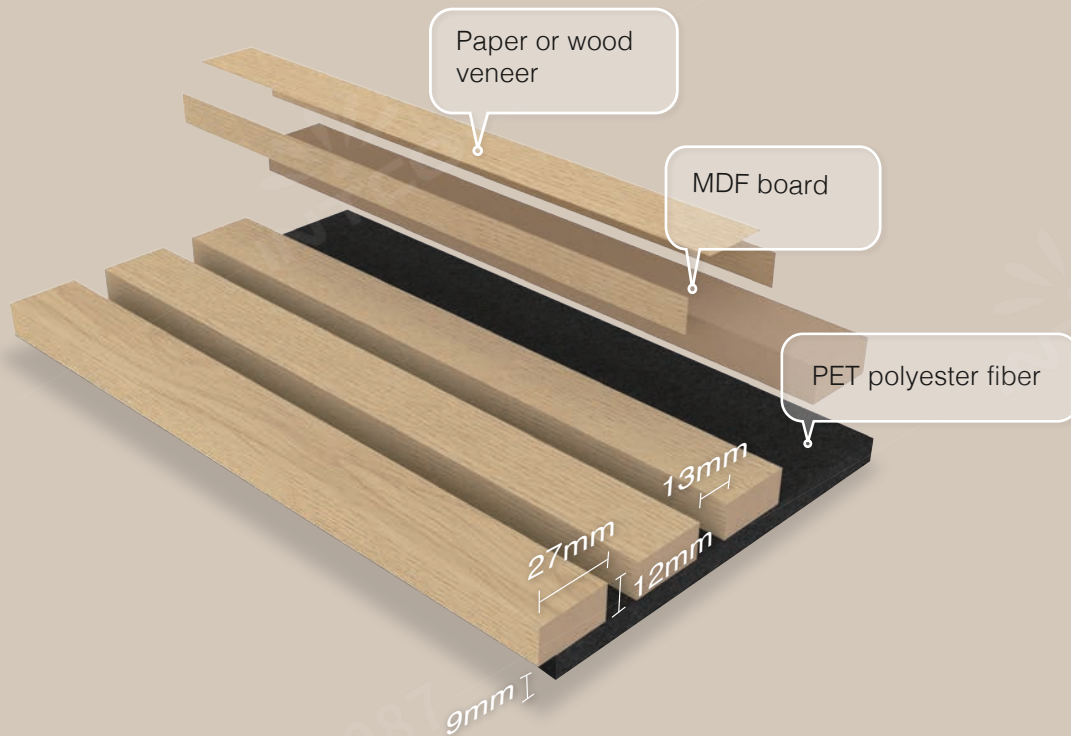


SIZE:

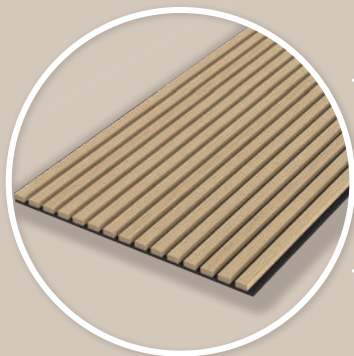
21 x 21 x 2400 mm
21 x 21 x 3000 mm

JM1118

Material



Advantages



- Effective noise reduction**
 Sound-absorbing felt mitigates noise and reduced unwanted reverberations.
- Rich in color and shape**
 Versatile woodgrain colors and finishes to appeal to any style of home or office.
- Flame retardant**
 The black acoustic felt can achieve B1 grade flame retardancy.
- Environmental protection**
 CARB P2 grade medium density fiberboard protects from harmful gases and compounds.

Specifications

Material	MDF board & PET polyester fiber
Finish	Paper or wood veneer
Length	2400/3000mm
Width	280/300/600mm
Thickness	21mm (MDF thickness 12mm+PET felt thickness 9mm)
Eco-friendly (MDF board)	CARB P2
Flame retardant (felt)	Can achieve EN 13501-1:2018 CLASS B, ASTM E84 CLASS A
NRC (felt)	Direct installation, NRC is 0.3; install keel, NRC is better
Clean	Clean with a vacuum cleaner or a dry cloth, not with water
Installation	Screws or mounting glue



JM1116-MBW-H361



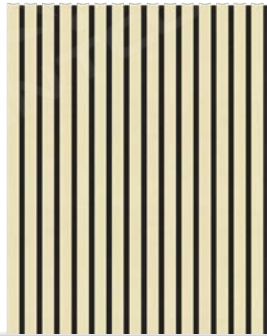
THAYER

Featuring an artfully crafted fluted design, the THAYER collection is an eclectic-yet-chic look that brings trend-forward personality to any space. Adorned with unique contrasting finishes, this cohesive collection boasts artisan appeal and visual interest for any home.

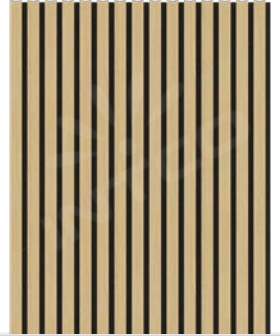
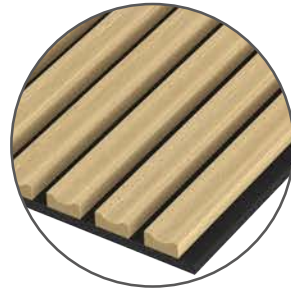


THAYER

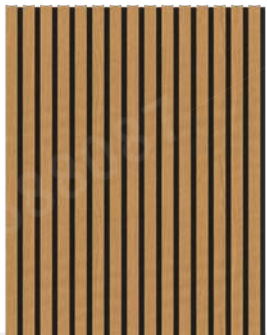
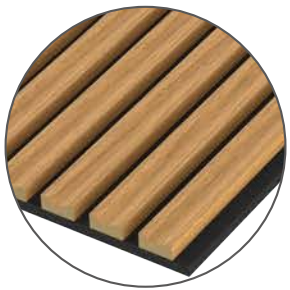
JM1116-MBW-H361



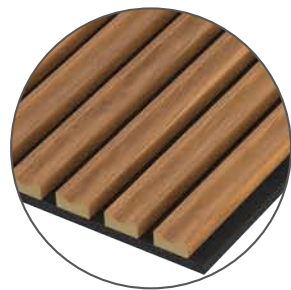
JM1116-MBW-H199



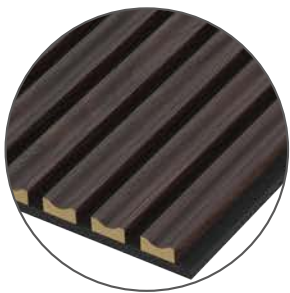
JM1116-MBW-H364



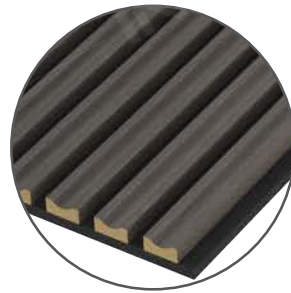
JM1116-MBW-H363



JM1116-MBW-H57



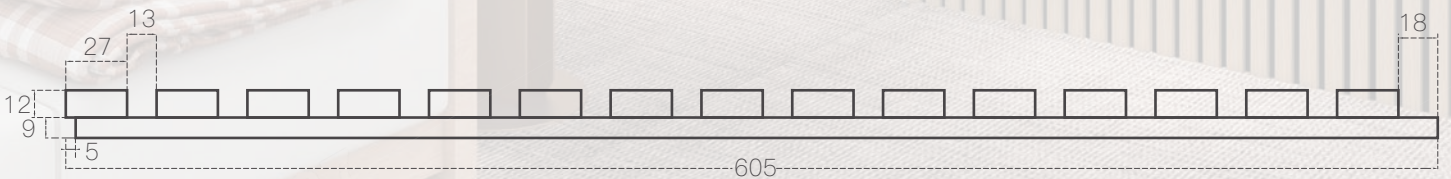
JM1116-MBW-H362



Total size	21x600x2400mm; 21x600x3000mm;21x280x2400mm;21x280x3000mm
Weight	9.4kg / 11.8kg / 4.4kg / 5.5kg
Number of MDF board	15 / 7 pcs
Size of MDF board	27x12mm
Distance between MDF board	13mm



JM1114-MBW-H199



AUDEN

Our clean, modern reeded pattern features a minimalistic appeal that plays homage to traditional classical architecture and design. This timeless look brings a comforting contrast and unique focal point to any room. From accent walls to acoustic ceilings, this timeless pattern comes in a variety of modern finishes.



AUDEN



Total size	21x600x2400mm; 21x600x3000mm;21x280x2400mm;21x280x3000mm
Weight	10.8kg / 13.6kg / 5.1kg / 6.3kg
Number of MDF board	15 / 7 pcs
Size of MDF board	27x12mm
Distance between MDF board	13mm

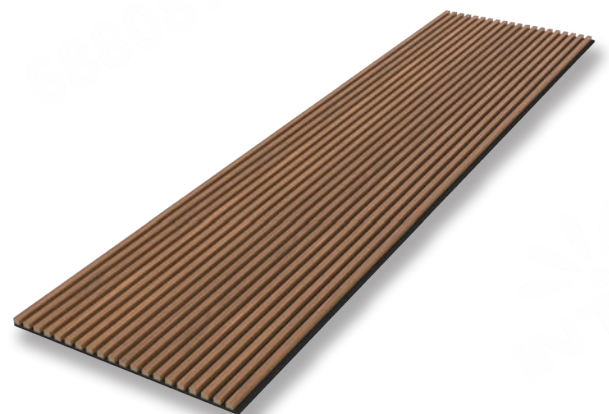


JM1115-MBW-H363



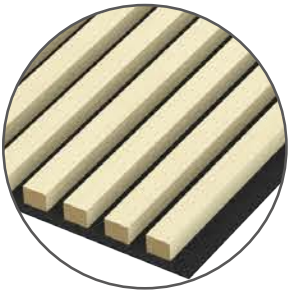
LEDGER

Stunningly textural, our LEDGER collection features a narrow slatted pattern with varying color and detail. Inspired by the architectural details of the Arts and Crafts movement, this modern collection brings one-of-a-kind character to any room creating a high-end transitional look.

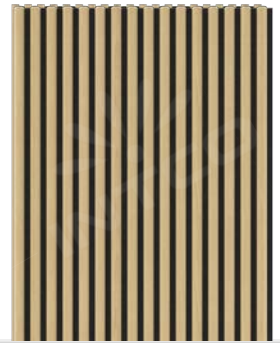
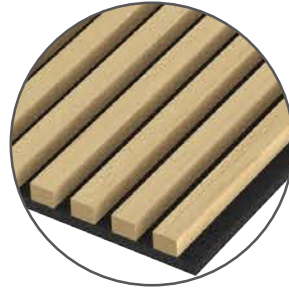


LEDGER

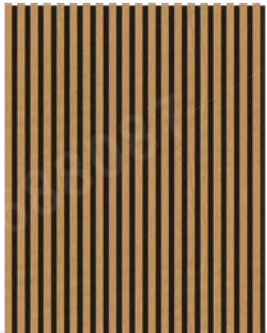
JM1115-MBW-H361



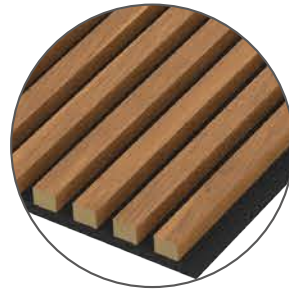
JM1115-MBW-H199



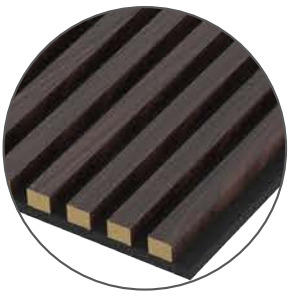
JM1115-MBW-H364



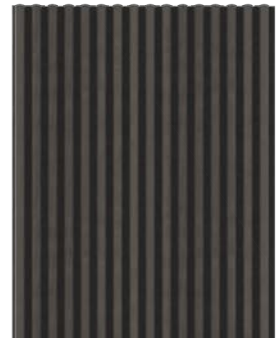
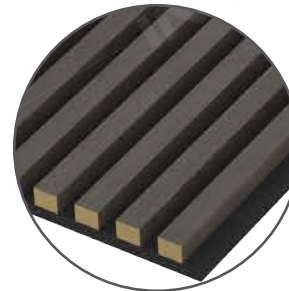
JM1115-MBW-H363



JM1115-MBW-H57



JM1115-MBW-H362



Total size	21x600x2400mm; 21x600x3000mm; 21x300x2400mm; 21x300x3000mm
Weight	9.5kg / 11.9kg / 4.8kg / 6.0kg
Number of MDF board	20 / 10 pcs
Size of MDF board	17x12mm
Distance between MDF board	13mm

FINISH OPTIONS

Paper



H361



H199



H364



H363



H57



H362



H154



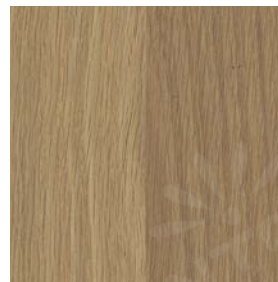
H369



H173



H342



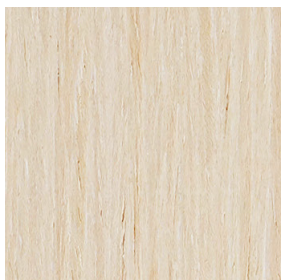
H227



H318



Wood veneer



30WV



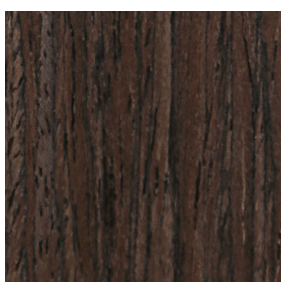
26WV



10WV



B111



23WV

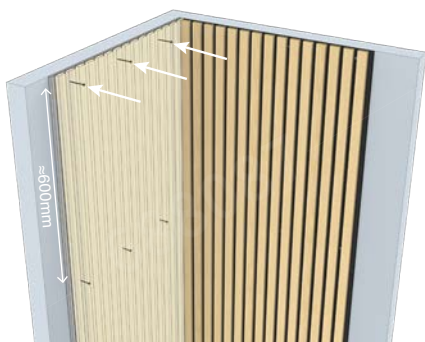
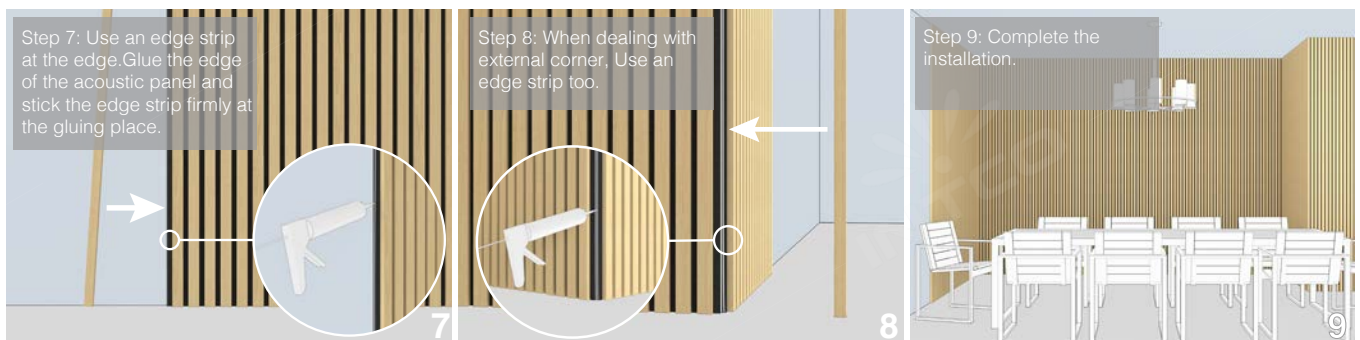
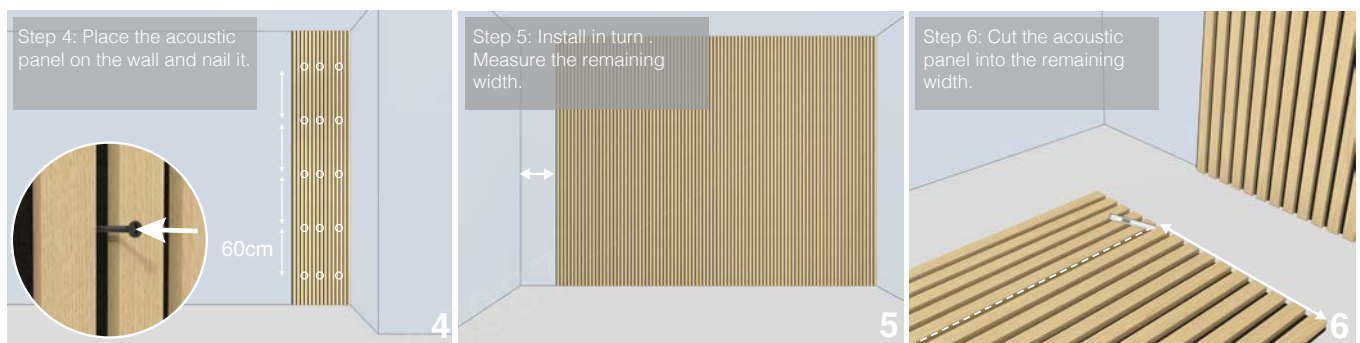
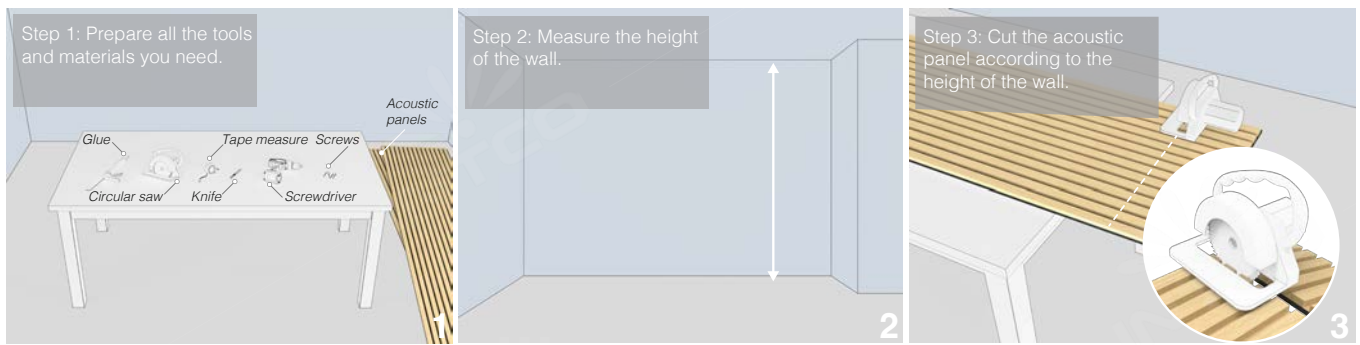


22WV



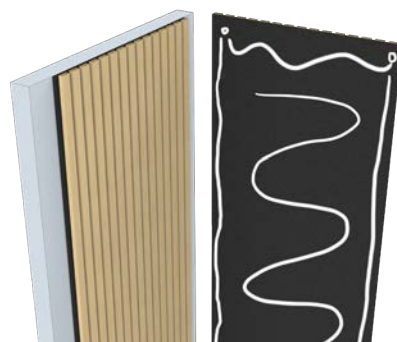
20WV

Installation



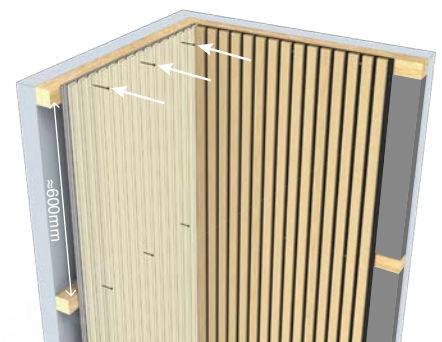
a. Nail acoustic panels directly to the wall.

absorption class: D



b. Attach acoustic panels to the wall with nail-free glue.

absorption class: D



c. Install fiberglass wool or rock wool between the battens.

absorption class: A

Oak Acoustic Wood Wall Panels

Our wooden slats are beautiful and decorative wooden panels that are sound absorbing as well as aesthetically pleasing at the same time. With high-quality acoustic panels, each one can be easily installed on walls and ceilings, both in domestic and commercial applications; offering modern styling in every way.

Produced with luxury quality and smooth wood veneer finish, our contemporary offers a unique ambiance to any space.

Our contemporary panels are made out of clean and smooth Lamella strips mounted onto a uniquely designed, recycled acoustic felt material for that extra acoustic insulation.

Installation of our panels is fast and easy, with minimal tools required, allowing you to quickly transform any space.

CATALOG

Brief introduction

Acoustic wooden slats panel

PET Veneer panel with milling pattern

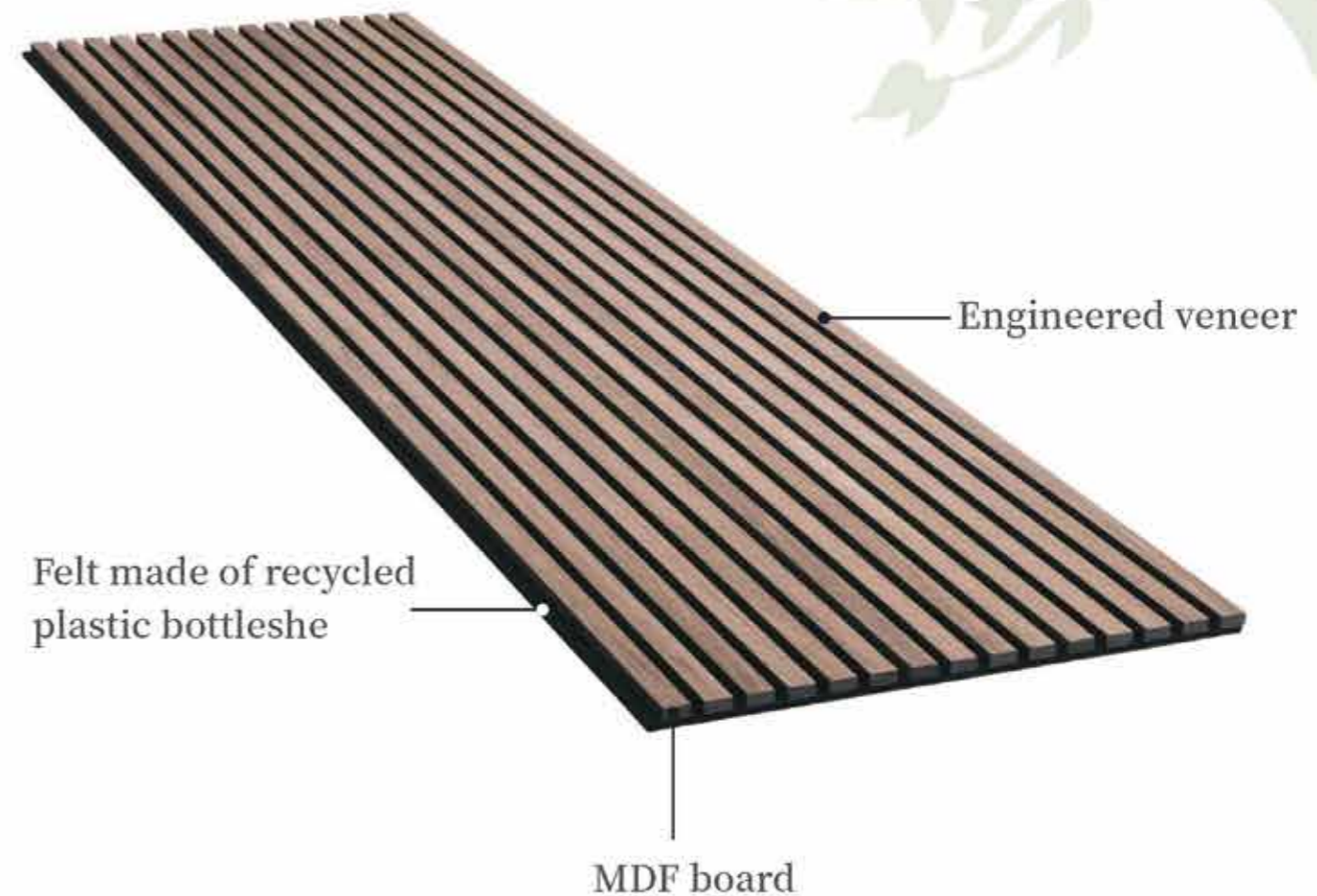
Case analysis

Installation method

ACOUSTIC wooden slats panel

Each panel measures 2440mm x 600mm and is formed from 12mm deep and 27mm wide lamellas with a distance of 13mm in between each. These slats are then mounted on a base of 9mm thick acoustic felt. The panel is 22mm thick in total, including the slats and the felt.

ONE



Sustainability

We care for the environment.

That's why we prefer to use sustainable materials in our products.

A

The felt



Felt made of recycled plastic bottles

Our acoustical is made from recycled plastic which means that We take a waste product and transform it into something useful and beautiful. The felt absorbs the sound waves and dampens the sound.

B

The slats



MDF board

Our core consists of a medium density fibre board and is available in black or natural. The slats create diffusion, which essentially means that they break the sound waves and thereby dampen the sound.

C

The surface



Engineered veneer

Using ordinary wood or fast-growing wood as raw materials, using the principle of bionics and computer simulation design, a new type of wood decoration material is developed.

Available in 2 specifications

01

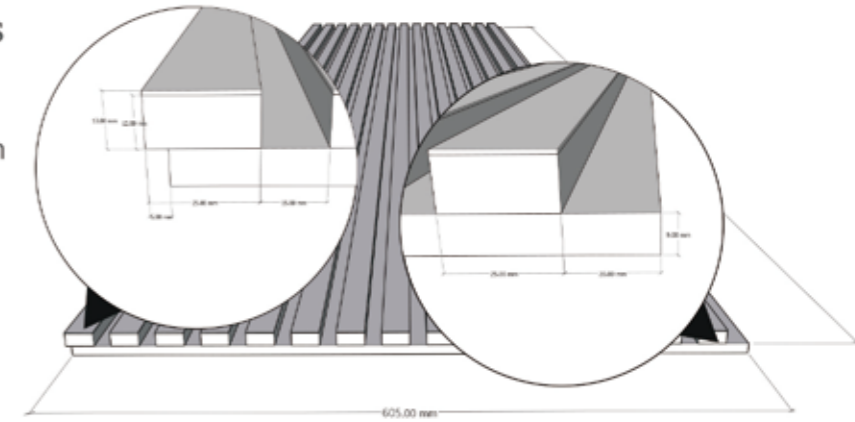
Overall dimensions: 600*2440*22mm

The felt: 605*2440*9mm

The slats: 25*2440*12mm

The surface: 25*2440*1mm

Material: PET Polyester Fiber,
MDF, Wood Veneer



02

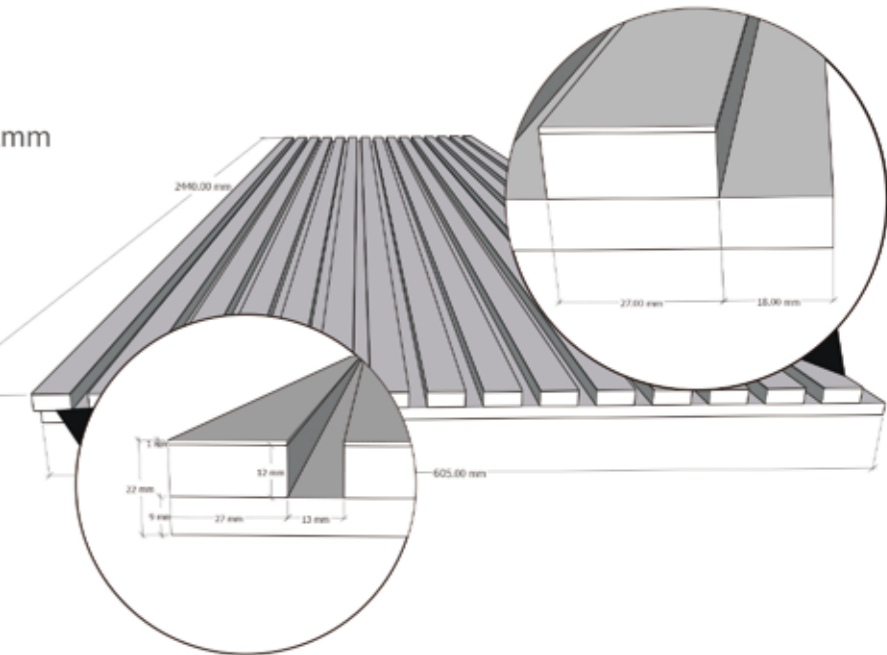
Overall dimensions: 600*2440*22mm

The felt: 605*2440*9mm

The slats: 27*2440*12mm

The surface: 27*2440*1mm

Material: PET Polyester Fiber,
MDF, Wood Veneer



The slat wood wall panels have been carefully designed to effortlessly transform any space, enhancing the surroundings both visually and acoustically. The wood panels help to create an environment that is not only quiet but beautifully contemporary, soothing and relaxing.

TWO



PET Veneer panel with milling pattern

Firstly, we use silicon glue to attach the engineered veneer on the black basic panel.

Secondly, making the panel get through the grooving machine

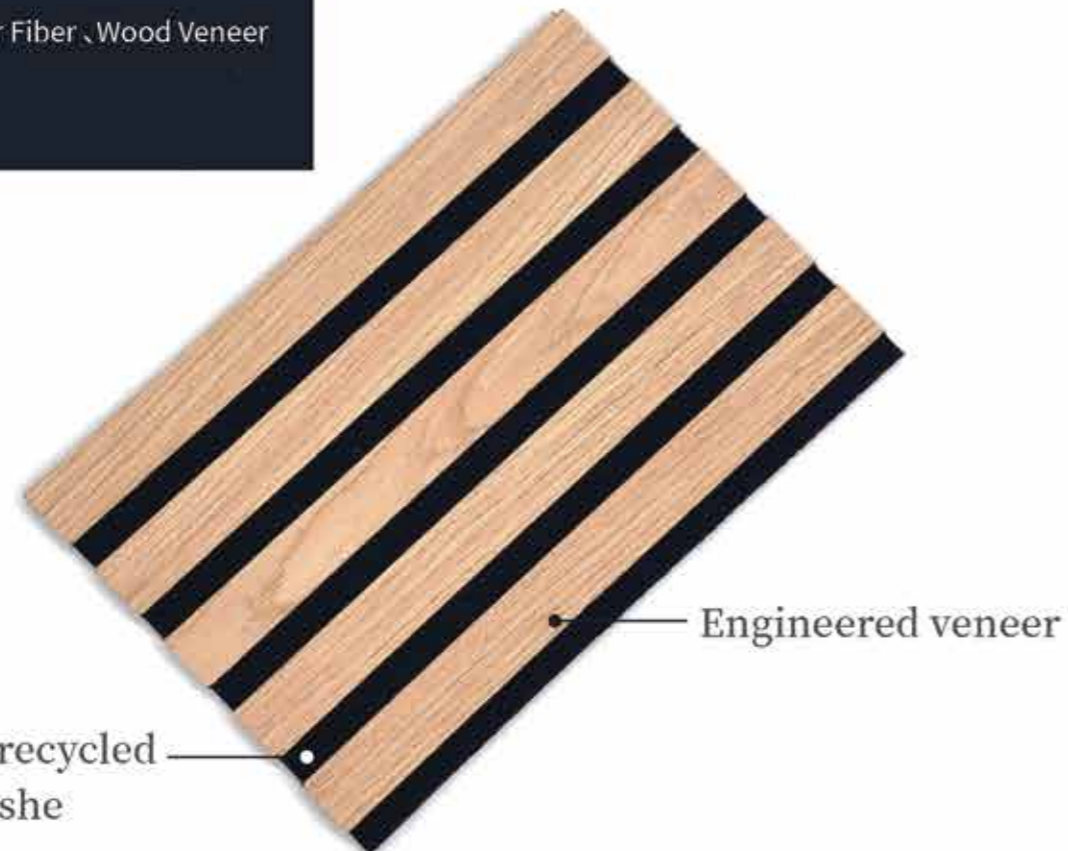
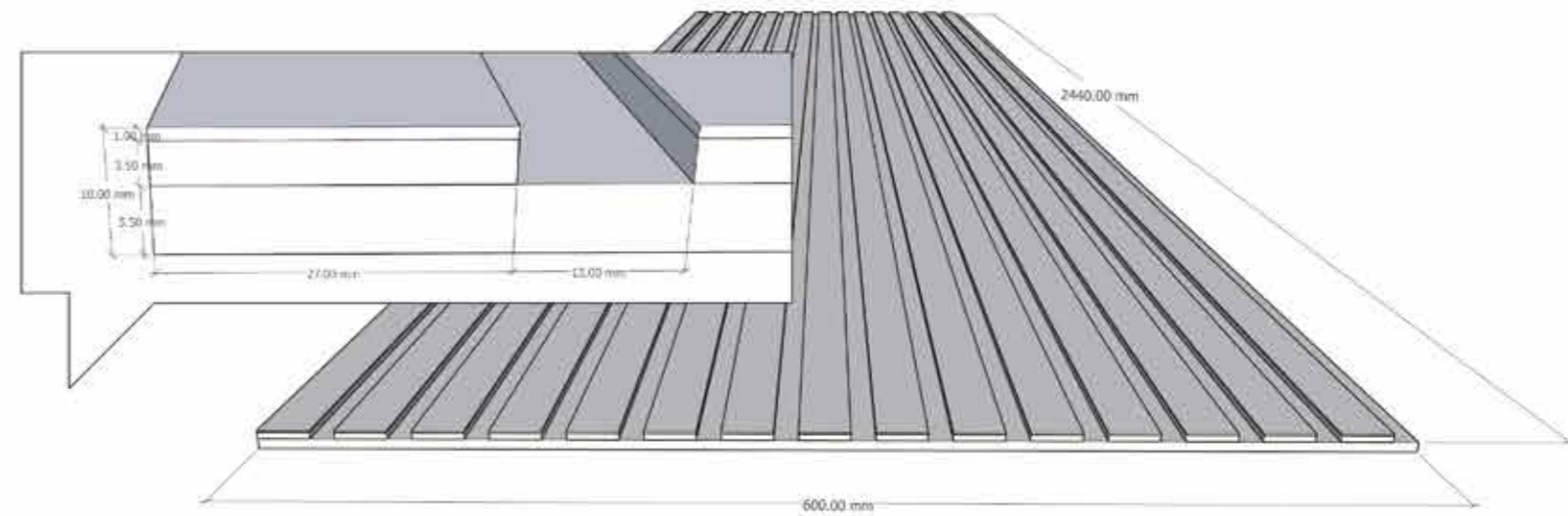
Finally, using special tool to ensure each panel clean

Overall dimensions: 600*2440*10mm

The surface: 27*2440*1mm

slot depth: 3.5mm

Material: PET Polyester Fiber , Wood Veneer



Engineered veneer

Felt made of recycled plastic bottles

Available in 5 colors



Light oak



Smoked oak



Oiled oak



Walnut



Grey oak

Case analysis



There is always that place, in the office, home, hotel, public areas etc. that sound so echoey. We can add or re-arrange furniture but it doesn't always do the trick and the place can begin to look cluttered.





They bring beauty and class to any room or ceiling, with minimum space and effort required. The most simple of transformations can be achieved with our great selection of designs, improving the acoustics, while the slatted design brings a modern, warming, contemporary feel

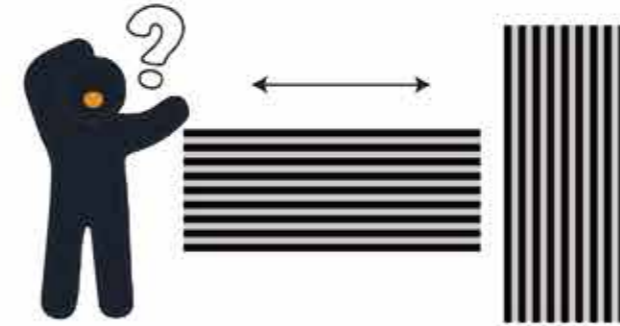


Installation method

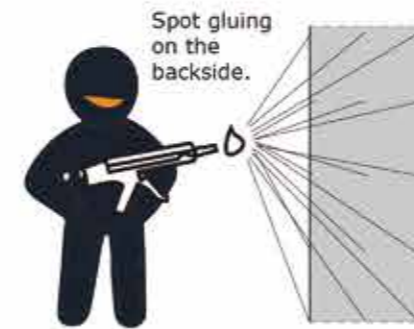


You will need glue and glue chair, spirit level, screwdriver, pencil and FibroTech black screws. For protection use cotton gloves when working with the panels.

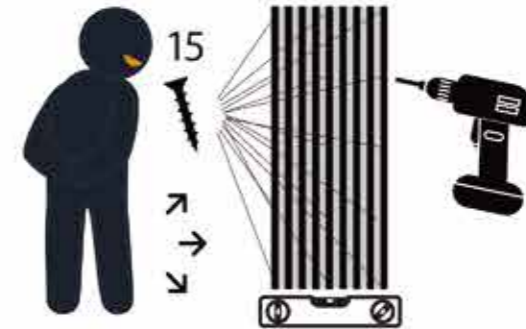
NOTE! Because of the amount of wood in the acoustic panels, they can have a bit of a smell of wood. Therefore, we recommend that they are acclimatized before mounting.



Decide which direction you want to use your acoustic panels. The acoustic panels can be shortened from the back with fine-toothed blade.



Spot gluing on the backside.

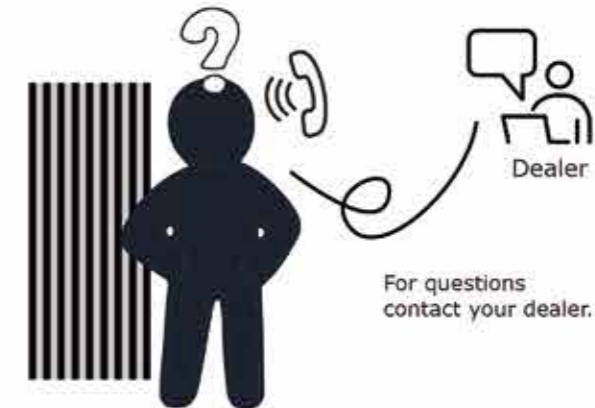


Install the acoustic panels with Fibrotech screws or adhesive through the polyester on wall or ceiling.

Use 15 screws to each panel.

Formwork shall be distanced by 60 mm. Always use screws when mounted on ceilings.

Remember: You can either use our adhesive or our black screws when installing your new panels on your wall. Always use screws when installing panels on ceilings.



For questions contact your dealer.