

Alunotec
Build Your Pergola

PERGO -T520

Create your outdoor living space -stylish shading,
fresh air,easy maintenance



ALUNOTEC PERGO-T520

Garden landscape & leisure products are getting more popular for peoples to decorate their garden backyard or commercial center projects. AlunoTec aluminum garden pergola will make the most of your outdoor space. You can have shade at the touch of a button while still being able to let the sunshine in when it is preferred. With the matched gutter system, you have shelter from the rain as well. Its electronically controlled louvers can be opened and closed to your desired position. It's ideal for providing sun and rain protection for locations like backyard, spa, hot tubs, deck, garden or swimming pool.

Materials

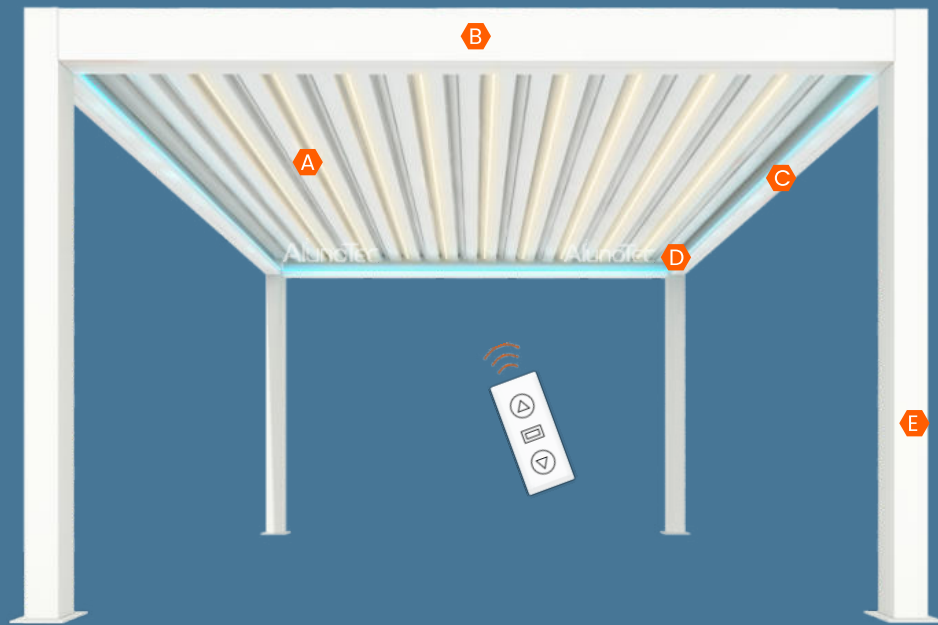


Certifications and Warranty



Protection



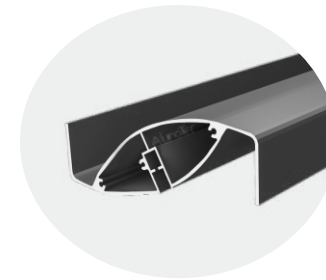


PERGO-T520

The specifications below is applicable to all design options.

Motorized Design	✓
Powder Coated	3-5 Years' Guarantee
Maximum Width (Single Bay)	4.5 m
Maximum Projection (Single Bay)	6 m
Motor Waterproof Rating	IP67
Wind Resistant	120-150 km/h
Snow Loading	20-40 cm
Optional Items	Sliding Glass Door / Side Screen / Color Lights / Rain Sensor

Main Profiles



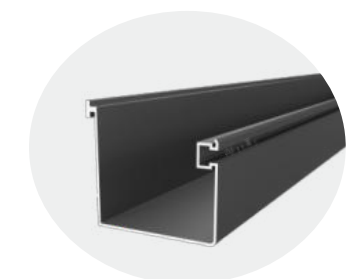
A Louver Blade



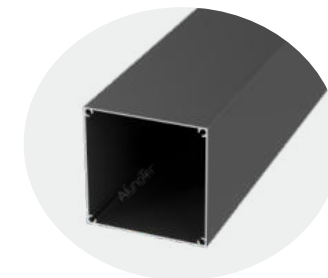
B Beam 1



C Beam 2



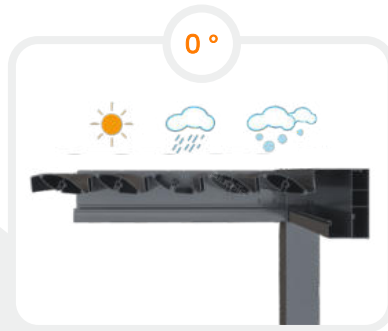
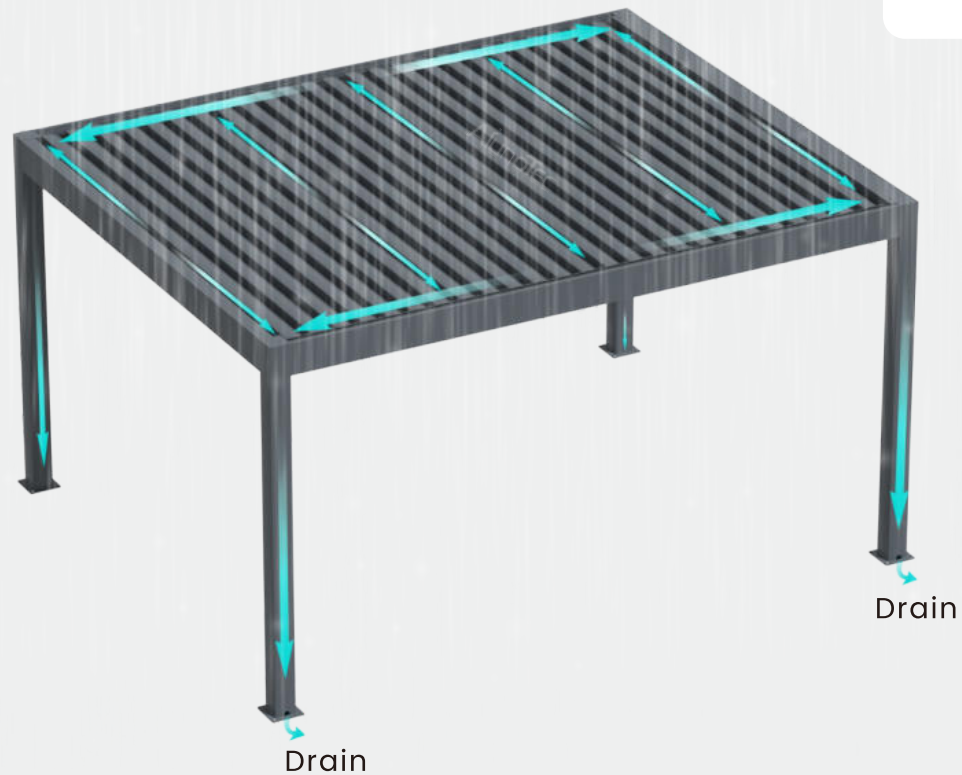
D Gutter



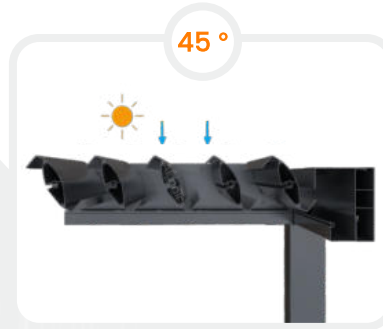
E Post

Drainage System

Water is channeled away directly through the internal drain pipe to the ground or connecting the underground drainage system.



Louvers are designed such that they will interlock to keep out the weather.

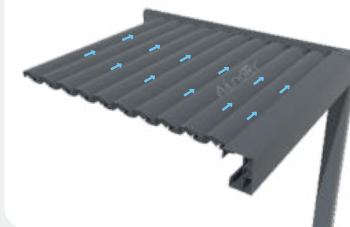


Tilt the louvers to block the sun but allow the air ventilation via the opening at the louvers.



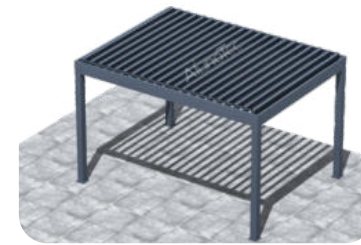
Rain and sun protection can be adjusted when open louvers at a different desired angle.

Protection from Rain

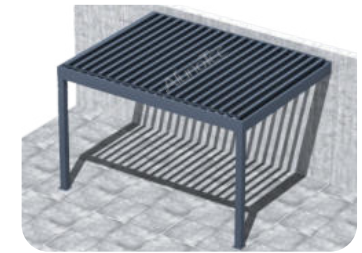


In the event of rain, our pergola is closed to provide complete protection. Water is channeled away directly through the internal drain hidden inside the post.

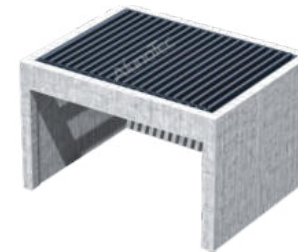
Design Options



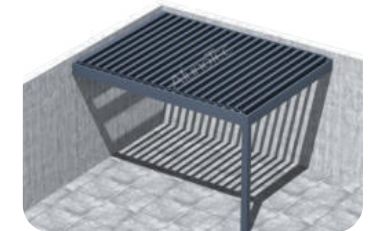
TYPE 1
Free Standing



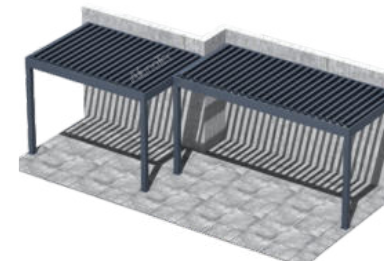
TYPE 2
Wall-Mounted
Blades Perpendicular to Wall



TYPE 3
Fitting into Existing
Structure



TYPE 4
Wall-Mounted
Blades Parallel to Wall

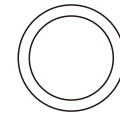


TYPE 5
Customized Design

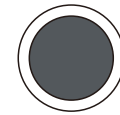


Colour Options

Colours



RAL 7016
Anthracite Grey



RAL 9016
Traffic White



RAL 7016 Anthracite Grey
RAL 9016 Traffic White



Customized Color



Optional Items

AlunoTec provide a full range of supporting products



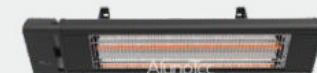
Motorized Side Screen



Louver Frame



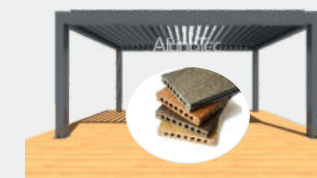
Sliding Glass Doors



Electric Heater



Lighting Options



WPC Decking

AlunoTec Project Showcases

Please contact us to know more



Alunotec
Build Your Pergola



2 years
warranty on
electronic
equipment



10 years
warranty on
the powder
coating

CONTACT US

✉ info@alunotec.com  www.alunotec.com

☎ +86-769-88776226  Building D, Peace Square, Nancheng District, Dongguan, Guangdong, PRC.

Please scan the QR code below if you want to know more



Website



Facebook



YouTube



TikTok



Linkedin